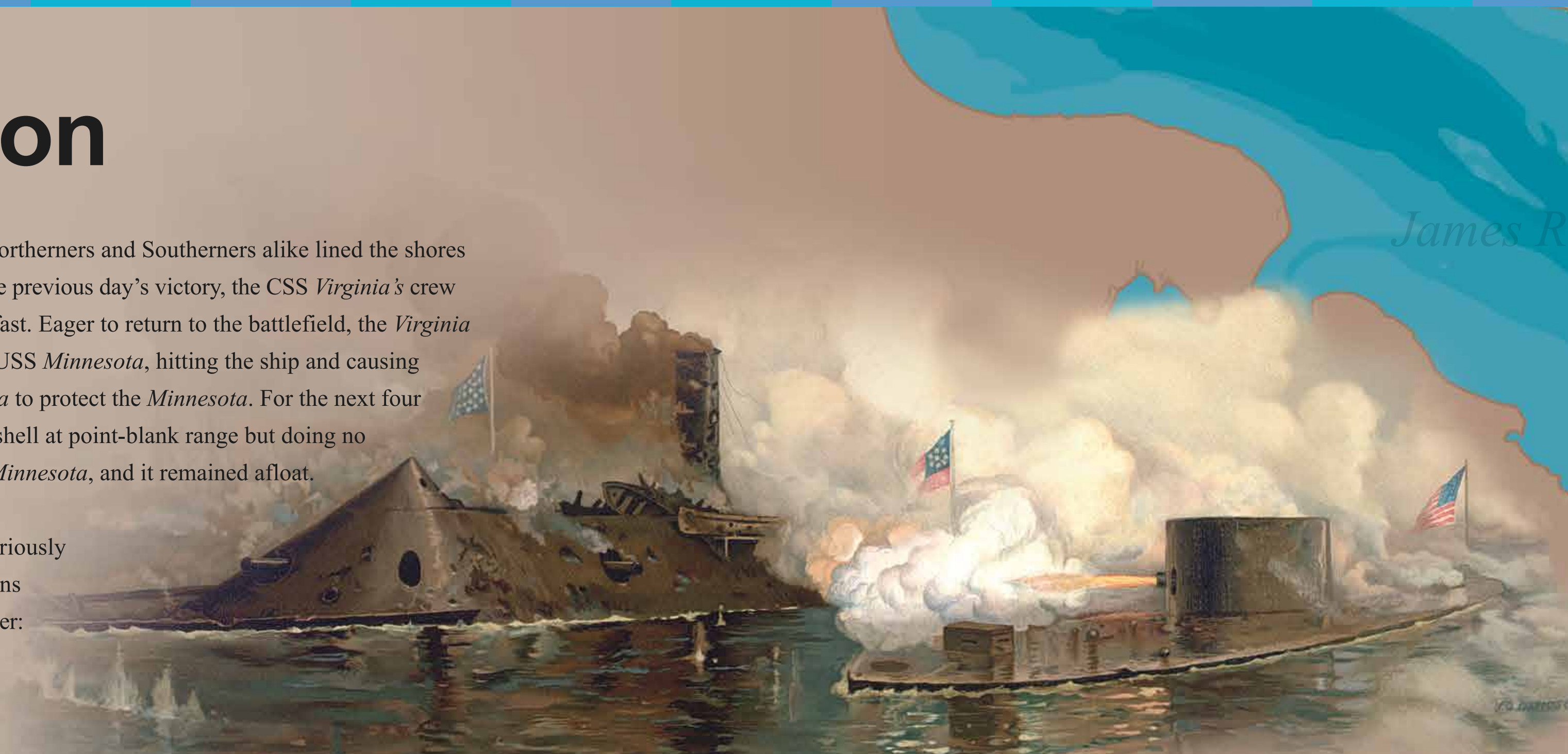




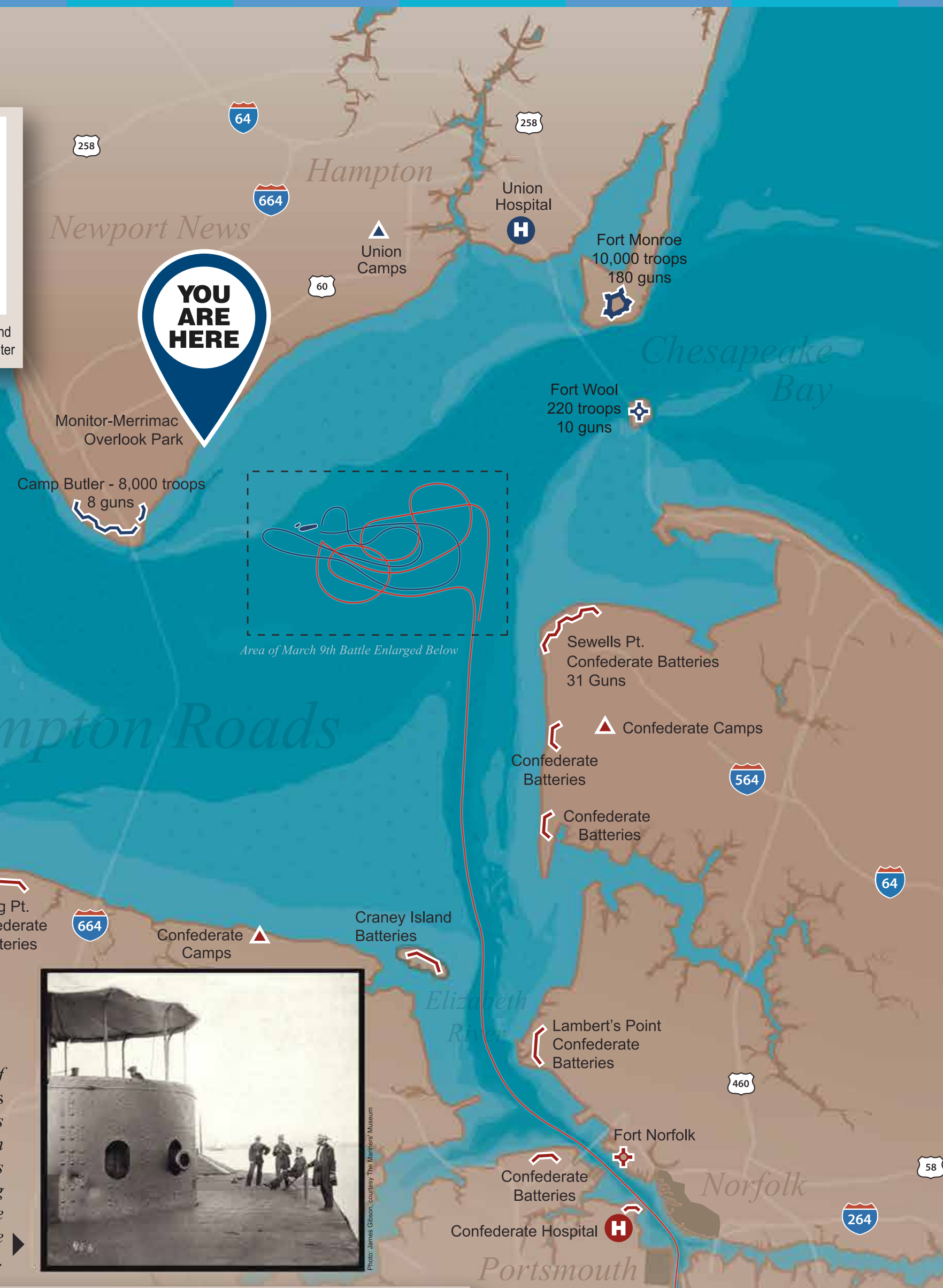
Iron Against Iron

As the news spread of the impending clash of the ironclads, Northerners and Southerners alike lined the shores of Hampton Roads to watch the day's battle. Confident from the previous day's victory, the *CSS Virginia's* crew began the day with two jiggers of whiskey and a hearty breakfast. Eager to return to the battlefield, the *Virginia* fired the opening salvo from a thousand yards out against the *USS Minnesota*, hitting the ship and causing an explosion. The *USS Monitor* moved to intercept the *Virginia* to protect the *Minnesota*. For the next four hours, the two ironclads circled one another, trading shot and shell at point-blank range but doing no significant damage. Through it all, the *Monitor* protected the *Minnesota*, and it remained afloat.

The battle that day left neither the *Monitor* nor the *Virginia* seriously damaged, and both sides claimed victory. Ultimately, historians have called the battle a draw. However, there was one clear winner: ironclad technology. The age of wooden warships was over.



A Painting by J. O. Davidson of the battle between USS Monitor and CSS Virginia. From the Collection of President Franklin D. Roosevelt. Courtesy: The Mariners' Museum



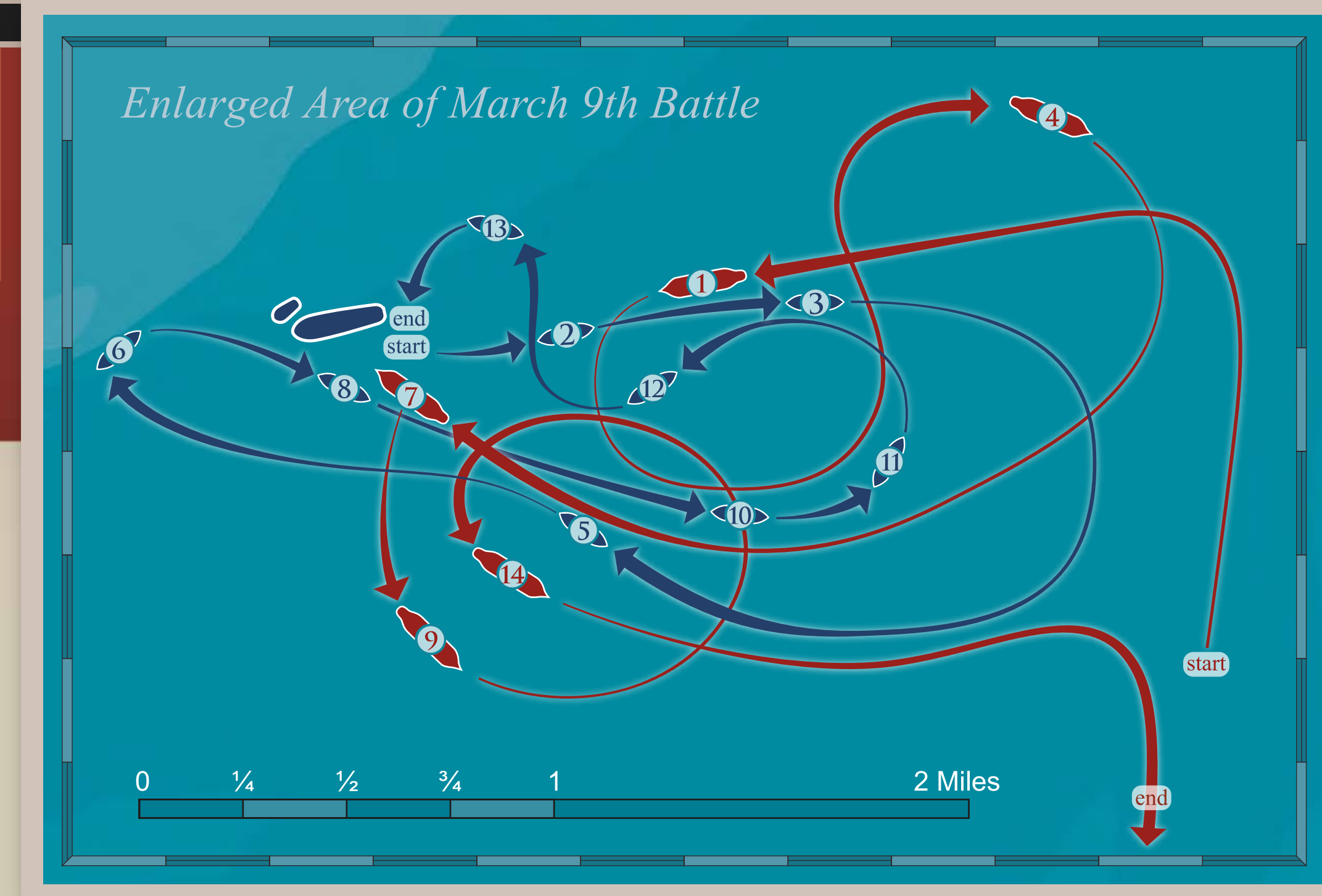
DAY 2 March 9, 1862

UNION

2:00 am USS <i>Minnesota</i> attempts to refloat at high tide but fails.	8:35 am USS <i>Monitor</i> blocks CSS <i>Virginia</i> , which is heading directly towards USS <i>Minnesota</i> . CSS <i>Virginia</i> evades USS <i>Monitor</i> and comes back around at USS <i>Minnesota</i> .	10:05 am USS <i>Monitor</i> reloads ammunition in the turret; meanwhile CSS <i>Virginia</i> sees USS <i>Monitor</i> departing and heads for USS <i>Minnesota</i> .	12:10 pm USS <i>Monitor</i> attempts to ram CSS <i>Virginia</i> and misses. As USS <i>Monitor</i> passes CSS <i>Virginia's</i> stern, CSS <i>Virginia</i> fires, and USS <i>Monitor's</i> pilothouse is struck, wounding captain Lt. John L. Worden. USS <i>Monitor</i> breaks off action.
2:00 am USS <i>Monitor</i> attempts to refloat at high tide but fails.	8:35 am USS <i>Monitor</i> blocks CSS <i>Virginia</i> for the second time from making a turn towards USS <i>Minnesota</i> .	10:05 am USS <i>Monitor</i> attempts a third blocking move on CSS <i>Virginia</i> , then heads toward the shallow water of the shoals to reload.	12:10 pm USS <i>Monitor</i> attempts a fourth blocking maneuver on CSS <i>Virginia</i> and CSS <i>Virginia</i> rams USS <i>Monitor</i> .
2:00 am USS <i>Monitor</i> attempts to refloat at high tide but fails.	8:35 am USS <i>Monitor</i> blocks CSS <i>Virginia</i> for the second time from making a turn towards USS <i>Minnesota</i> .	10:05 am USS <i>Monitor</i> attempts a third blocking move on CSS <i>Virginia</i> , then heads toward the shallow water of the shoals to reload.	12:10 pm USS <i>Monitor</i> attempts a fourth blocking maneuver on CSS <i>Virginia</i> and CSS <i>Virginia</i> rams USS <i>Monitor</i> .

CONFEDERACY

8:00 am CSS <i>Virginia</i> departs its mooring at Sewells Point and enters Hampton Roads.	10:15 am CSS <i>Virginia</i> runs aground attempting to reach USS <i>Minnesota</i> .	11:15 am CSS <i>Virginia</i> reverses off the shoal and turns back for USS <i>Minnesota</i> .	12:25 pm CSS <i>Virginia</i> steams directly at USS <i>Minnesota</i> thinking USS <i>Monitor</i> has retreated. Due to its deep draft and the receding tide, CSS <i>Virginia</i> cannot reach USS <i>Minnesota</i> .
8:00 am CSS <i>Virginia</i> departs its mooring at Sewells Point and enters Hampton Roads.	10:15 am CSS <i>Virginia</i> runs aground attempting to reach USS <i>Minnesota</i> .	11:15 am CSS <i>Virginia</i> reverses off the shoal and turns back for USS <i>Minnesota</i> .	12:25 pm CSS <i>Virginia</i> steams directly at USS <i>Minnesota</i> thinking USS <i>Monitor</i> has retreated. Due to its deep draft and the receding tide, CSS <i>Virginia</i> cannot reach USS <i>Minnesota</i> .



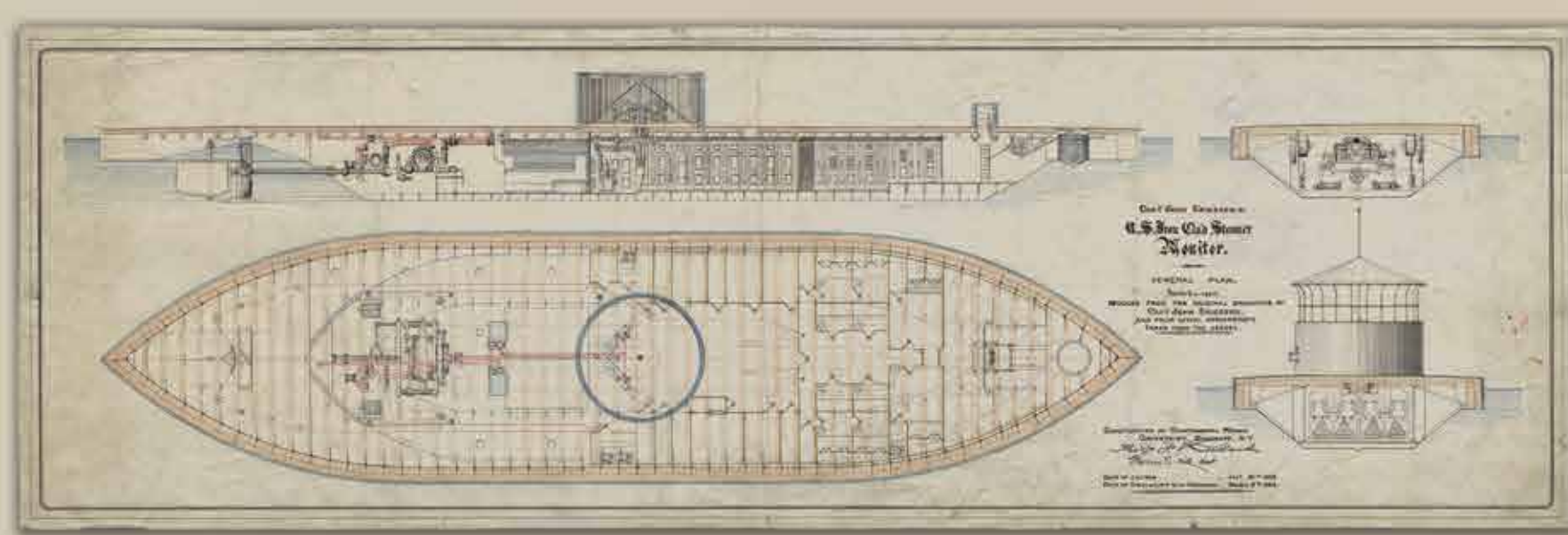
LEGEND

- USS Monitor
- USS Monitor movement
- CSS Virginia
- CSS Virginia movement
- USS Minnesota
- USS Dragon

Scale in Miles
0 1/4 1/2 3/4 1 2 Miles

TIMELINE

General plan and profile views of Monitor, showing interior features and details, published in February 1862, just after her launch.



One of just a few photographs of the USS Monitor, providing the only actual evidence of the ironclad's appearance and crew.

